



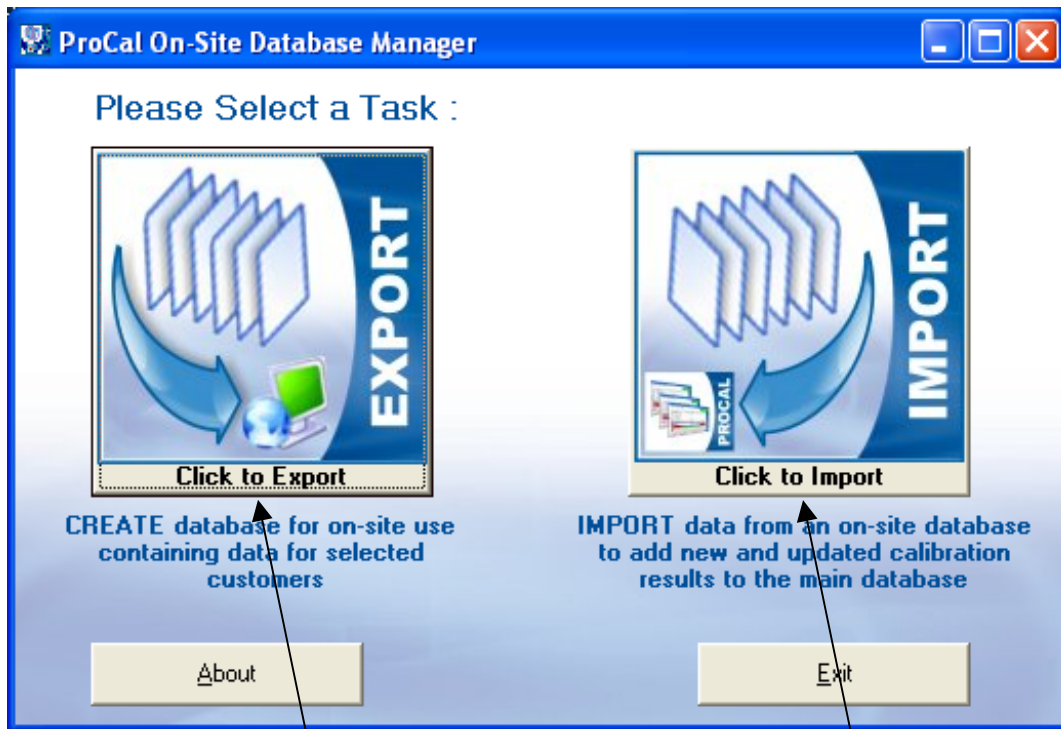
PROSITE

ProCal On-Site Database Manager

Introduction

Transmille ProSite is an add on program for use with the ProCal calibration software package. ProSite allows the user to manage data transfer to a portable database for use on-site at customer premises or with in-situ equipment with the ability to later re-import this data into the main database.

ProSite handles this complex operation, whilst ensuring both local and on-site database are kept synchronised to maintain data integrity. Operation is controlled via a simple and easy to use interface, with the two main functions accessed from on-screen buttons as shown below :



Export function for creating the 'on-site' database

Import function for importing 'on-site' databases back into the main database.

Exporting Customers Data



The ProSite export function provides a method for selecting which customer data to export to the portable 'on-site' database. Once this database is created it can be copied to the laptop or on-site computer for use in calibrating one or more customers' instruments.

The export function provides the flexibility of exporting one or more customers' data, and will export the entire instrument history for use on-site should any amendments/corrections to data need to be made on-site.

| | |
|--|---|
| <p>Export to On-Site Database</p> <p>STEP 1 : Select Customers for which to export instruments and calibration data</p> <p>All Customers</p> <ul style="list-style-type: none"> Arrow Calibrations Beta Calibrations Echo Calibration Services Fox Calibration Services Golf Calibration Services Hotel Calibration Services Indigo Calibration Services Jones Calibration Services TRANSMILLE LTD. <p>Select Customer and click > (or double click the customer) to add to the export list</p> <p>Customers to Export</p> <p>Select Customer and click < (or double click the customer) to remove from the export list</p> | <p>STEP 1</p> <p>Select one or more customers as listed on the left hand side of the screen. Either one customer at a time or all customers in the list may be added to the list using the buttons provided.</p> <p>The Search button (magnifying glass) allows the list to be narrowed down to specific customers by searching as required (eg. Trans* will display all customers starting with these characters)</p> |
| <p>STEP 2 : Create On-Site Database</p> <p>Create On-Site Database</p> <p>Target Database Path:</p> <p>C:\ProCal\Certificates\ProResDB On-Site Export 08-09-200</p> | <p>STEP 2</p> <p>Select the path to save the on-site database, then click to proceed</p> |
| <p>STEP 3 : Display Database in Windows Explorer</p> <p>Show Database Folder</p> <p>This function displays the database in Windows explorer. The file can then be copied to your On-Site PC either via a network or USB memory stick / CD etc.</p> <p>Main Menu</p> | <p>STEP 3</p> <p>Click on 'Show Database Folder' to view the file created in windows Explorer.</p> |



Adds all customers displayed in the left hand list to the 'Customers to Export' list (use in conjunction with the search button to move a block of customers across)



Adds the currently selected customer (highlighted in blue) to the 'Customers to Export' list



Removes the currently selected customer (highlighted in blue) from the 'Customers to Export' list



Removes all customers displayed in the right hand 'Customers to Export' list

Target Database Path:

C:\ProCal\Certificates\ProResDB On-Site Export 08-09-200

The target (on-site) database path can be changed to the desired folder or device (eg. A USB memory stick or network drive).

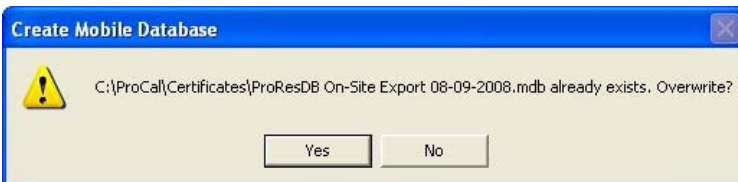
Customer Search Function



Use the search button to select specific customer from the list – use of ‘wildcard’ search may be employed, such as ‘Trans*’ to search for all customers starting with the letters ‘Trans’.



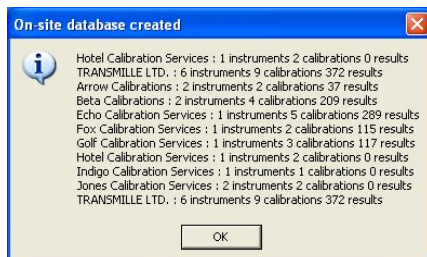
If the database file already exists, a message will be displayed confirming overwrite of this file



Export progress will be displayed as follows :



On completion of export the results of the export are displayed :



The database file created can be viewed by clicking on the ‘Show Database Folder’ button – the file will be displayed in Windows explorer :

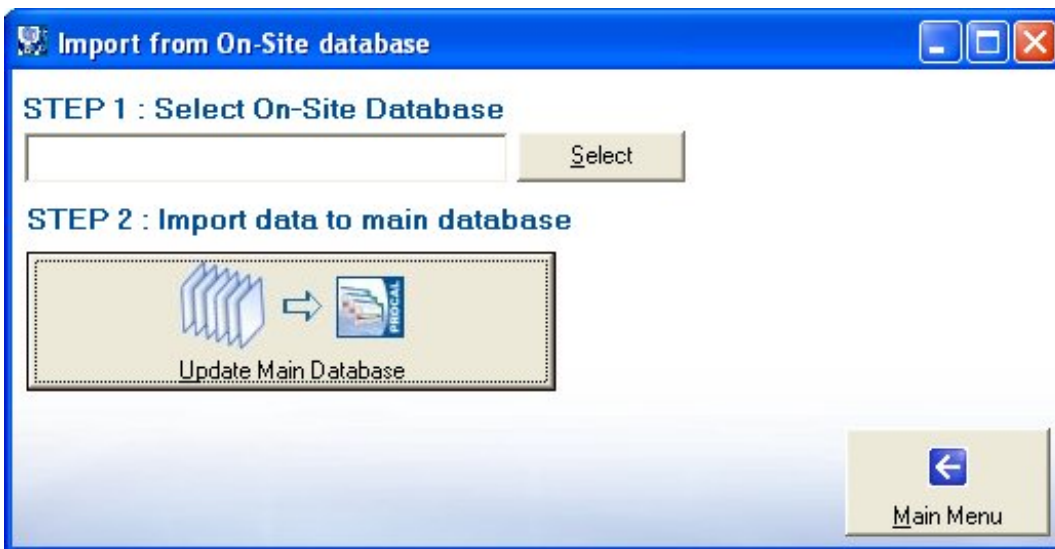
| | | | |
|--|--------|------------------------------|------------------|
| Contacts.mdb | 160 KB | Microsoft Access Application | 22/08/2008 14:58 |
| Empty_ProResDB.mdb | 300 KB | Microsoft Access Application | 02/07/2008 12:17 |
| ProResDB On-Site Export 05-09-2008.mdb | 580 KB | Microsoft Access Application | 05/09/2008 14:33 |

Importing Customers Data



The ProSite import function is designed for transferring data performed on-site back to the main ProCal database.

This data is intelligently transferred, copying only changed data back to the main ProCal database, ensuring data integrity between changes made on-site and back at the main laboratory.



Use the 'Select' button to choose the on-site database file (on a USB memory stick, network drive etc.), then click 'Update Main database'.

Import progress will be displayed as follows :



On completion of the import, a summary of data imported will be displayed :

