



DYMO LABEL PRINTER INSTALLATION

USING THE TRANSMILLE SOFTWARE CD

In order to use the DYMO *LabelWriter* range of printers with Transmille software please use the Transmille software CD to install the DYMO software.



Please *do not* use the DYMO CD supplied with the printer – the DYMO software provided on the Transmille CD contains the correct version.

Installing the printer

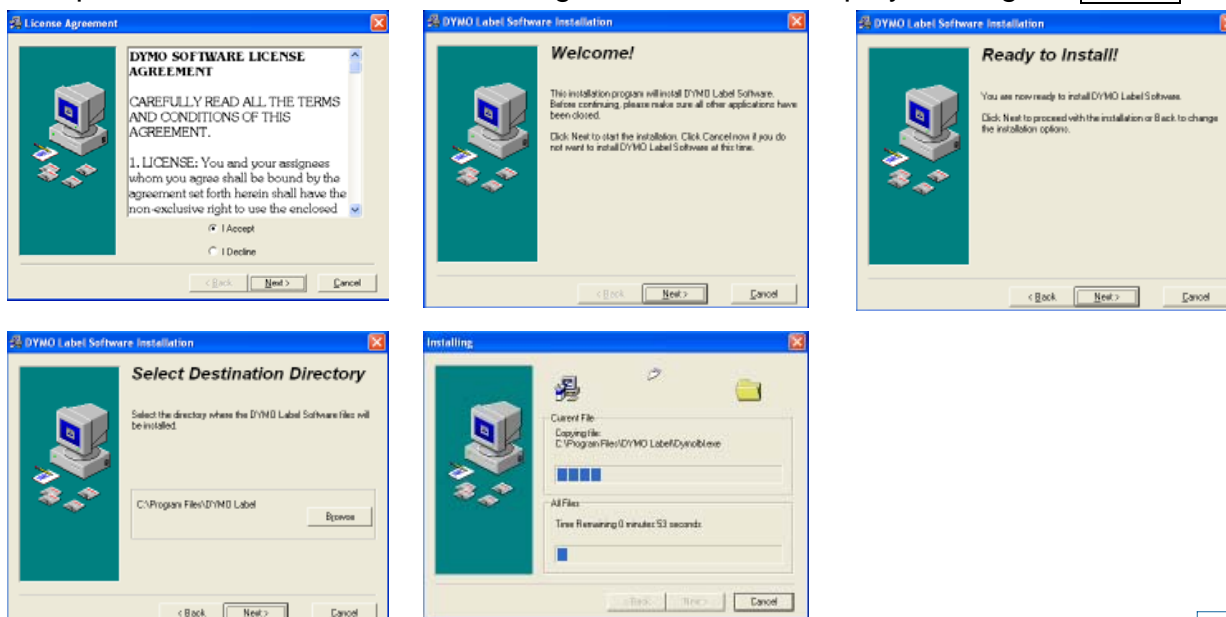
Insert the Transmille software CD and select INSTALL DYMO LABEL PRINTER option, Once the installer screen appears (right hand screen below) click to begin installation.



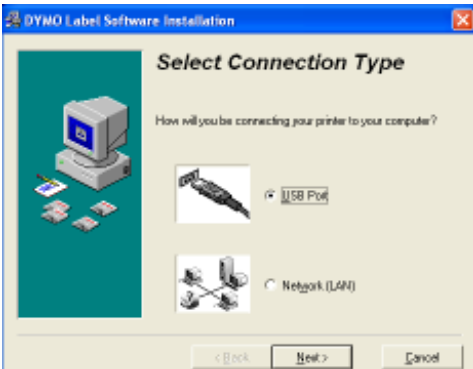
Once the drivers are installed the label software installation will begin automatically :

Installing the printer software

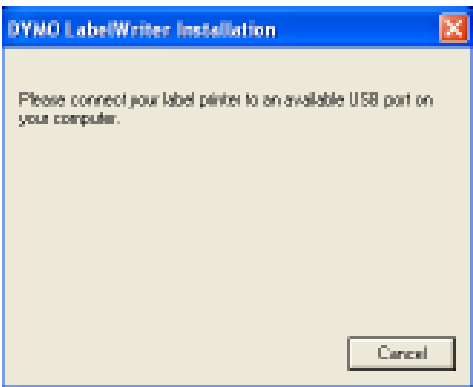
The printer software installation will begin – follow each step by clicking the **Next >** buttons :



Final Steps

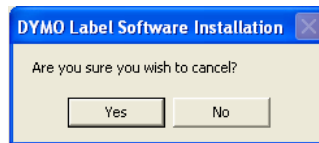


Select USB port

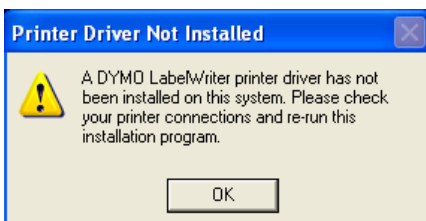


Connect printer to USB port on computer then click **CANCEL**

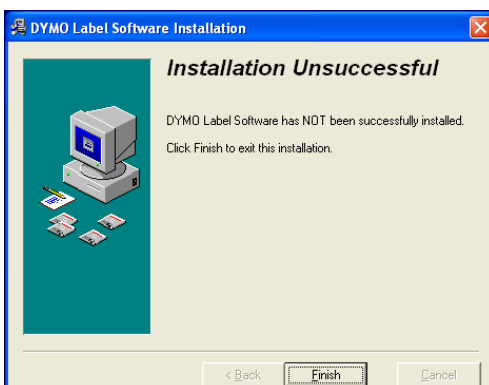
A WARNING WILL BE SHOWN AS BELOW - CLICK **YES** TO PROCEED



After confirming the cancel operation, the following message will be shown – this is OK as the printer driver will be installed in a later step.



Finally an 'unsuccessful installation' message will be displayed – this is OK as the printer driver will be installed in the next step.

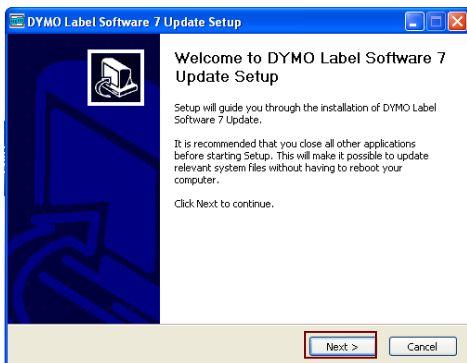




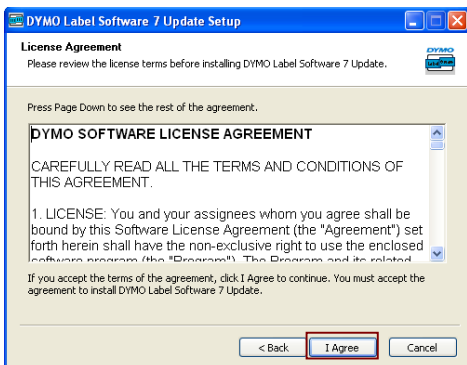
DYMO LABEL PRINTER INSTALLATION USING THE TRANSMILLE SOFTWARE CD

Installing the printer drivers

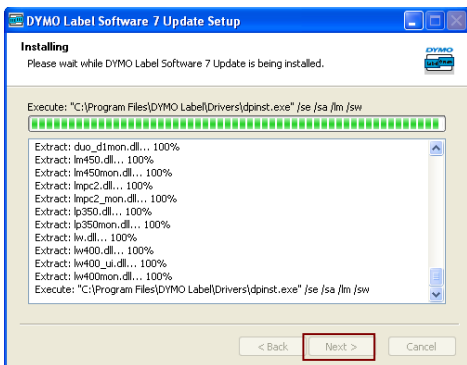
Click 'Next >'



Click 'I Agree'



Click 'Next >'



Click 'Finish'

